

Productlist

Description	Cat.-no	Amount
GENE`s Protein Ladder PS10 PLUS prestained (10 bands, 11 - 180kD)	310003	1x500µl
GENE`s Protein Ladder PS10 PLUS prestained (10 bands, 11 - 180kD)	310004	5x500µl
GENE`s Plus Protein Ladder PS11 prestained (11 bands, 10 - 175kD)	310005	1x500µl
GENE`s Plus Protein Ladder PS11 prestained (11 bands, 10 - 175kD)	310006	5x500µl
GENE`s XXL Protein Ladder prestained DeLuxe (10 bands, 10 - 260kD)	310007	2x250µl
GENE`s XXL Protein Ladder prestained DeLuxe (10 bands, 10 - 260kD)	310008	10x250µl

GeneON GmbH

Hubertusstrasse 20
D-67065 Ludwigshafen

Phone: +49-621-5720 864

Fax: +49-621-5724 462

E-Mail: info@geneon.net

Web: www.geneon.net

Protein Markers

geneon.net

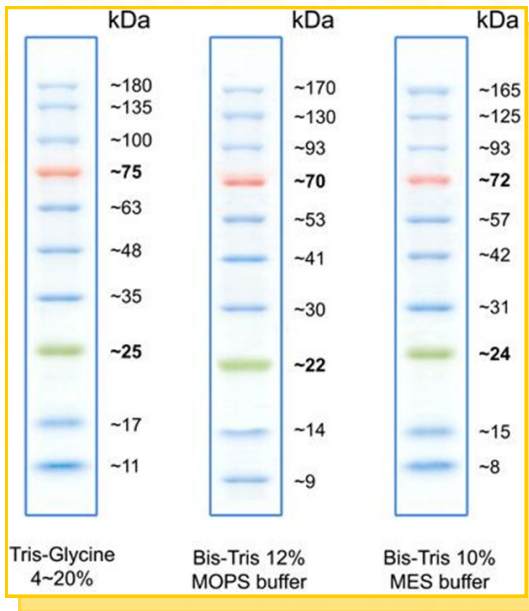
... a good decision ...

Protein Marker PS10 Plus

The Protein Marker PS10 PLUS is a mixture of 10 purified proteins which are re-dissolved 'ready-to-use' in loading buffer. The 10 sharp bands in the range of 11-180 kDa when analyzed by SDS-PAGE and stained with optimized dyes. The marker is ready-to-use. There is no need to boil.

Applications

- Monitoring of protein migration during SDS-polyacrylamide gel electrophoresis.
- Monitoring of protein transfer onto membranes during Western blotting.
- Sizing of proteins on SDS-polyacrylamide gels and Western blots.



Number of bands

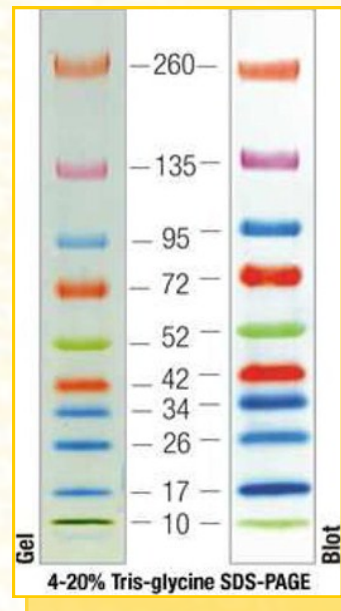
11, 17, 25, 35, 48, 63, 75, 100, 135, 180 kDa

Protein Marker XXL DeLuxe

Protein Marker XXL DeLuxe is a mixture of 10 coloured proteins. These proteins are recombinantly produced in E.coli, highly purified, and supplied 'ready to use' in loading buffer. The protein concentrations are optimized to yield well-defined bands directly visible in SDS-polyacrylamide gels. The marker is ready-to-use. There is no need to boil.

Applications

- Monitoring of protein migration during SDS-polyacrylamide gel electrophoresis.
- Monitoring of protein transfer onto membranes during Western blotting.
- Sizing of proteins on SDS-polyacrylamide gels and Western blots.



Number of bands

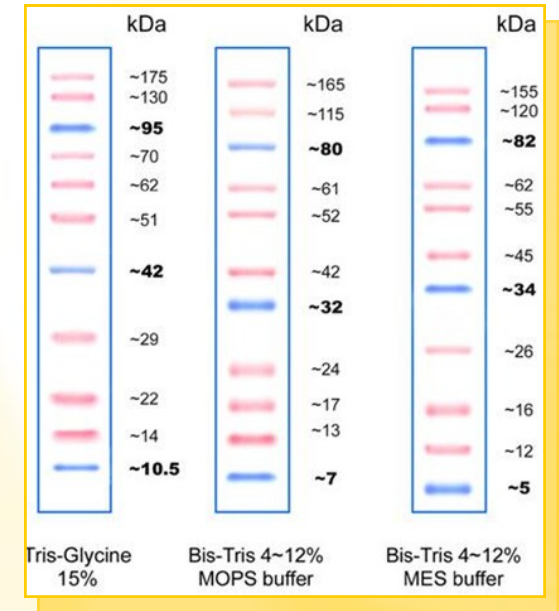
10, 17, 26, 34, 42, 52, 72, 95, 135, 260 kDa

Protein Marker PS11

Protein Marker PS11 contains 11 proteins that resolve into sharp, tight bands in the range of 10-175 kDa. The Protein Ladder allows to monitor molecular weight separation during electrophoresis, estimate molecular weights. The marker is ready-to-use. There is no need to boil. Includes the ~10, ~40 and ~95 kDa reference bands coupled with a blue dye.

Applications

- Monitoring of protein migration during SDS-polyacrylamide gel electrophoresis.
- Monitoring of protein transfer onto membranes during Western blotting.
- Sizing of proteins on SDS-polyacrylamide gels and Western blots.



Number of bands

10.5, 14, 22, 29, 42, 51, 62, 70, 95, 130, 175 kDa