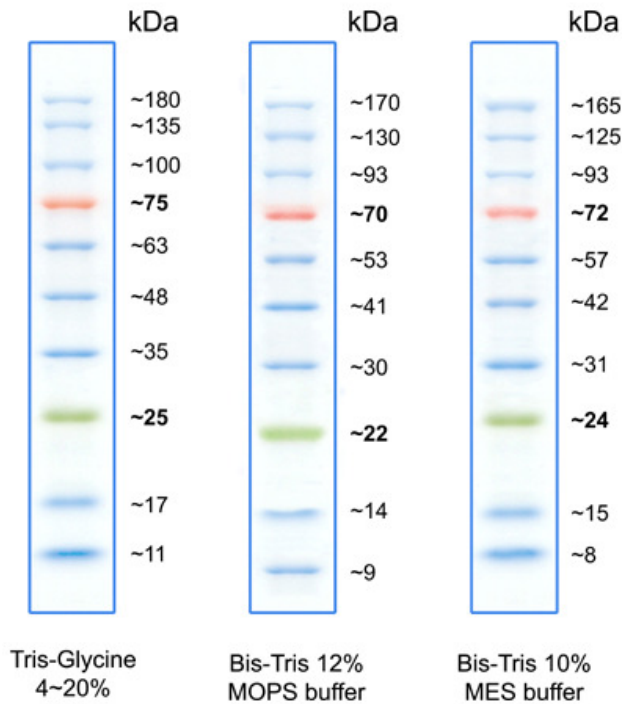


**Protein Marker PS10 PLUS**  
**Cat.-No: 310003**

**Description/Preparation:**

The Protein Marker PS10 is a mixture of 10 purified proteins which are re-dissolved 'ready-to-use' in loading buffer. The proteins resolve into 10 sharp bands in the range of 11-180 kDa when analysed by SDS-PAGE and stained with optimized dyes. **The marker is ready-to-use. There is no need to boil.**



**Applications**

- Monitoring of protein migration during SDS-polyacrylamide gel electrophoresis.
- Monitoring of protein transfer onto membranes during Western blotting.
- Sizing of proteins on SDS-polyacrylamide gels and Western blots.

**Usage:**

Mini gel application: 10 µl/well; 5 µl per well blots  
 Standard gel application: 20 µl/well; 10 µl per well for blots

**Number of bands: 10** 11, 17, 25, 35, 48, 63, 75, 100, 135, 180 kDa

**Loading:**

- Loading Denaturing Polyacrylamide gels (SDS-PAGE):
- Thaw marker at room temperature or heat at 37 – 40 °C for a few minutes. Do not boil!
  - Vortex gently to ensure the solution is homogeneous and load the ladder on SDS-polyacrylamide gel
  - 10 µl per well for mini-gels, 5 µl per well for blots
  - 20 µl per well for large gels, 10 µl per well for blots

1 ml marker is sufficient for 100 mini gels or 50 standard gels.  
 It is recommended to divide the marker into aliquots to avoid contamination of the stock solution.

**Note:**

Protein Marker PS10 is optimized for runs on 12 % SDS polyacrylamide gels. 8 to 10 % gels may cause proteins with low molecular weights to migrate with the dye front. On 12 to 15 % and gradient gels all bands are visible.

**Quality Control**

Tested in SDS-polyacrylamide gel electrophoresis and Western blotting.

**Storage:** at -20 °C

**Shipment:** on blue ice

**Ordering Information:**

Cat.-No.	Description	Amount
310003	Protein Marker PS10 PLUS (11-180 kDa)	500 µl
310004	Protein Marker PS10 PLUS (11-180 kDa)	5 x 500 µl

*.. a good decision ..*