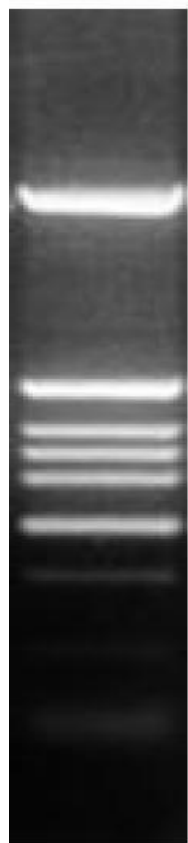


pBR322 DNA/Hinf I digest



1.7 % Agarose

bp

1632

504, 517

396

344

298

220, 221

154

75

Features: Supplied in 6X Loading buffer

Description/Preparation:

The pBR322 DNA/Hinf I digest yields the 10 fragments. pBR322 DNA was completely digested by Hinf I, phenol/chloroform extracted, ethanol precipitated, dissolved in 10 mM Tris-HCl (pH 8.0) and 1 mM EDTA.

Usage: 0,5 µg/lane

Concentration: 0,4 µg/µl

Number of bands: 10 1632, 517, 504, 396, 344, 298, 221, 220, 154, 75

Loading:

Agarose Gel / Polyacrylamide Gel

- Vortex gently before using
- apply 0,5 µg (agarose) or 0.5-0.9 µg (polyacrylamide gel) per 1 mm lane

Quantification:

See the graph for the percentage of the bands per band in ng, relating to 0.5 µg loaded marker. Use the same volume of DNA and marker. Additionally the concentration of loading buffer in samples and marker should be equal.

Note:

Dilute in TE or other buffer of minimal ionic strength. DNA may denature if diluted in dH₂O and subsequently heated.

Transportation: Shipped on blue ice or room temperature

Storage: at -20°C for 24 months

Ordering information:

Cat.-no	Description	Amount
300021	pBR322 DNA/Hinf I	2 x 100 µg
300022	BR322 DNA/Hinf I	5 x 100 µg