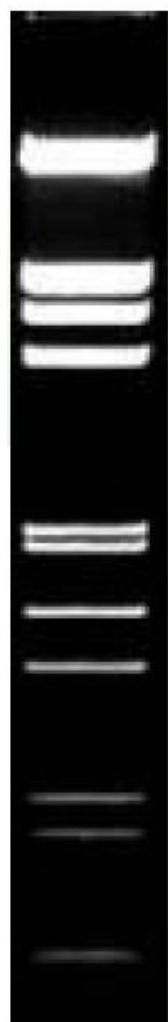


Phage Lambda DNA EcoRI/HindIII digest



1% Agarose

bp

21226*

5148

4973

4268

3530*

2027

1904

1584

1375

947

831

564

Features: Supplied in 6X Loading buffer

Description/Preparation:

The EcoRI/HindIII digest of phage-DNA yields the 13 discrete fragments. Lambda DNA was completely digested by EcoRI/HindIII, phenol extracted, ethanol precipitated, dissolved in 10 mM Tris-HCl (pH 8.0) and 1 mM EDTA. **The marker is ready-to-use.**

Usage: 0,5 µg/lane

Concentration: 0,2 µg/µl

Number of bands: 13 21226*, 5148, 4973, 4268, 3530*, 2027, 1904, 1584, 1375, 947, 831, 564, 125

Loading:

Agarose Gel / Polyacrylamide Gel

- Vortex gently before using
- apply 0,5 µg (agarose) or 0.5-0.9 µg (polyacrylamide gel) per 1 mm lane

Quantification:

See the graph for the percentage of the bands per band in ng, relating to 0.5 µg loaded marker. Use the same volume of DNA and marker. Additionally the concentration of loading buffer in samples and marker should be equal.

Note:

Dilute in TE or other buffer of minimal ionic strength. DNA may denature if diluted in dH₂O and subsequently heated.

*The cohesive ends (12b cos site of bacteriophage) of fragments 21226 bp and 3530 bp may anneal to and form the additional band. These fragments may be separated by heating to 65°C for 5 min and then cooling on ice for 3 min.

Transportation: Shipped on blue ice or room temperature

Storage: at -20 °C for 24 months

Ordering Information:

Cat.-no	Description	Amount
300013	Phage Lambda DNA EcoRI/HindIII	2 x 100 µg
300014	Phage Lambda DNA EcoRI/HindIII	5 x 100 µg